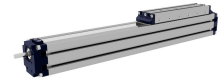
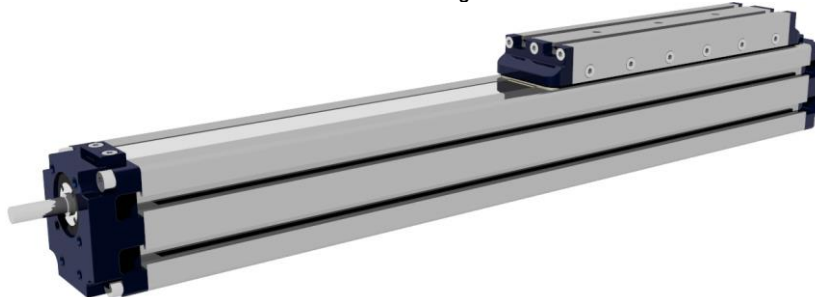


Colibri-L SE MTV

die präzise und robuste Lösung mit integriertem Kugelumlauführungssystem

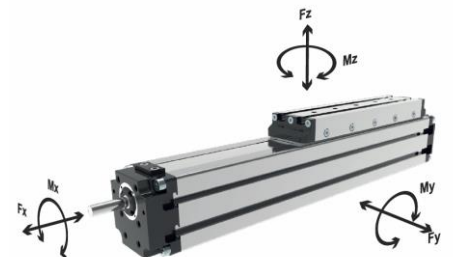


Unsere Lineareinheit mit integrierter Kugelumlauführung und Kugelgewindetrieb für präzise Positionierungen in robuster Ausführung.



Allgemeine Technische Daten

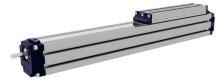
Typ:		MTV42	MTV55	MTV80
Baugröße:	mm	42x45	55x60	80x85
max. Geschwindigkeit (in Abhängigkeit von Spindelsteigung und Hub)	mm/s	750	1000	1250
max. Hub:	mm	1000	1000 1250 1500	1000 1250 1500
min. Hub:	mm	100	100	100
Spindelsteigung:	mm	5 10	5 10 16	5 10 20
Spindeldurchmesser:	mm	12	16	20
Tolleranzklasse Kugelgewinde:		T7	T7	T7
Gewicht bei 0 mm:	kg	1,8	3,2	7,5
Gewicht / 100mm:	kg	0,45	0,6	1,2
Max. Belastung:	F_x [N]	980 750	1850 1420 1025	3597 2996 1798
	F_y [N]	1250	4500	8500
	F_z [N]	1250	4500	8500
Max. Belastungsmoment:	M_x [Nm]	20	30	90
	M_y [Nm]	45	155	500
	M_z [Nm]	45	155	500
Flächenträgheitsmoment	I_x [cm ⁴]	15,1	47,3	190
	I_y [cm ⁴]	15,5	49,5	190,2
Wiederholgenauigkeit:	mm	+/-0,02	+/-0,02	+/-0,02
Leerlaufmoment:	Nm	0,1	0,2	0,3



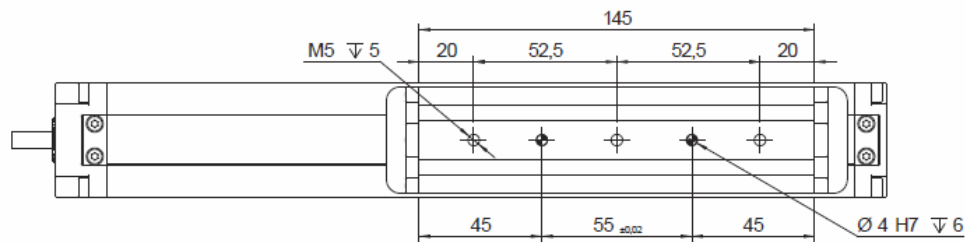
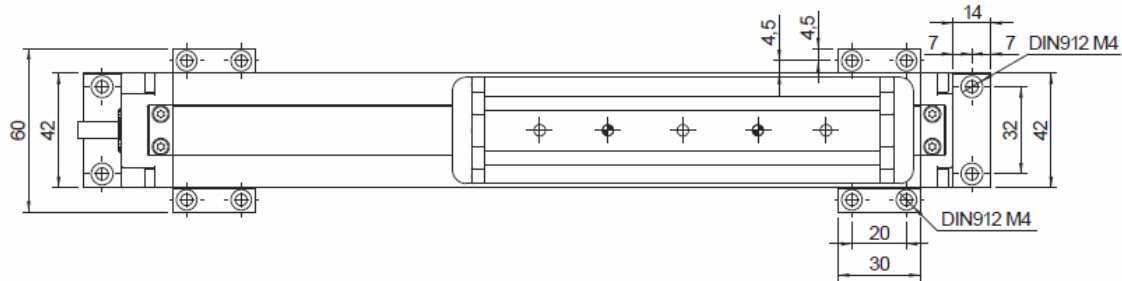
Die angegebenen Momente und Belastungen sind max. Werte, die nicht überschritten werden sollen.

Colibri-L SE MTV

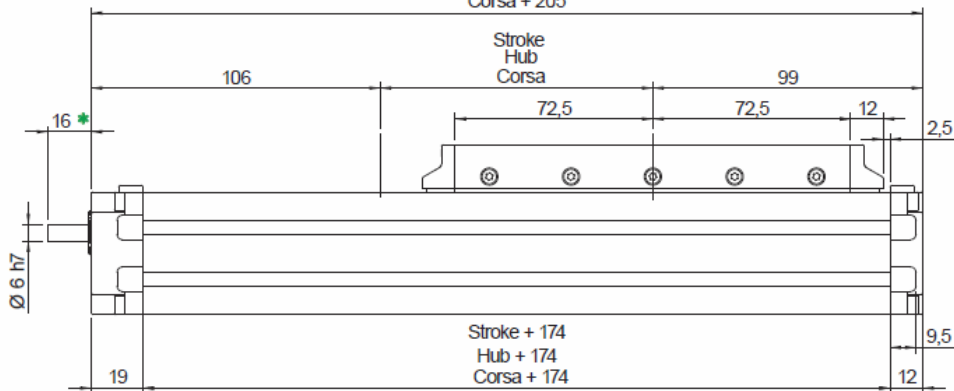
die präzise und robuste Lösung mit integriertem Kugelumlaufungssystem



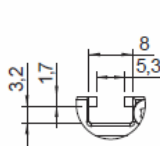
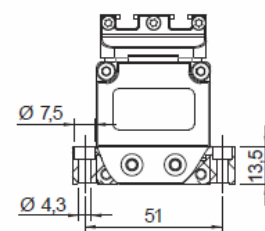
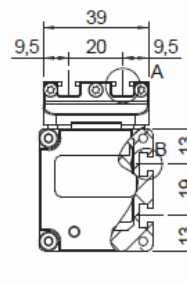
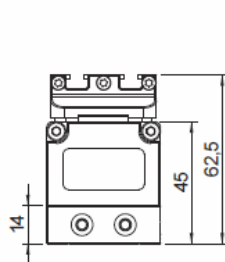
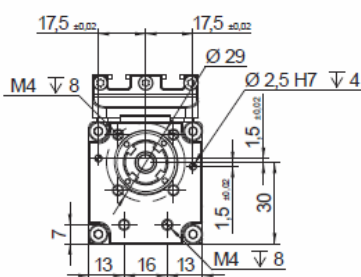
MTV42:



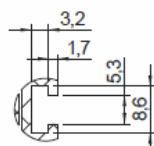
Stroke + 205
Hub + 205
Corsa + 205



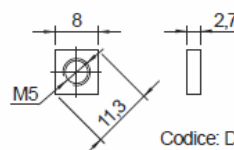
Stroke + 174
Hub + 174
Corsa + 174



View A
Ansicht A
Vista A



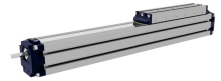
View B
Ansicht B
Vista B



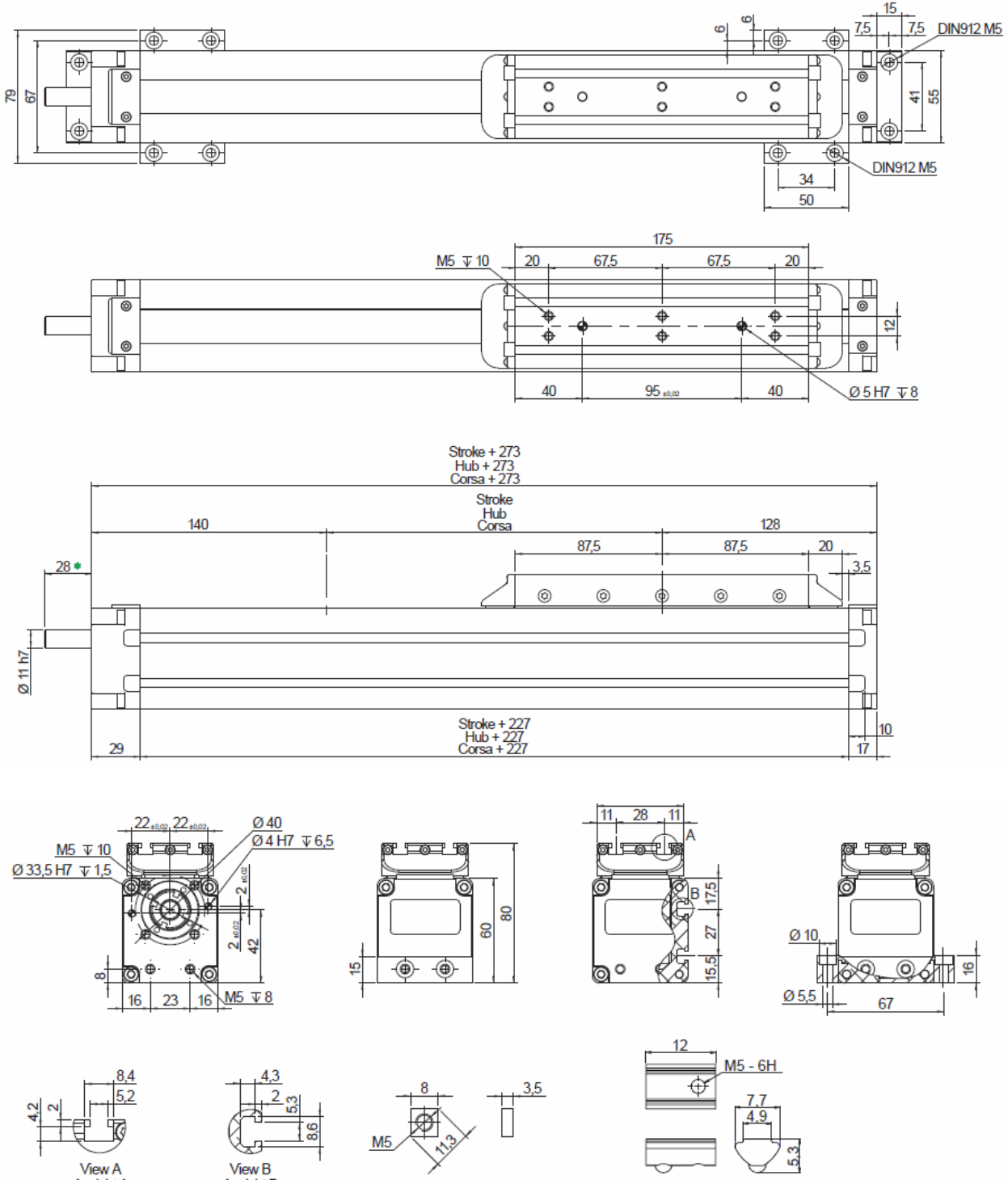
Codice: DQM05-01
Part. n: DQM05-01
Bestellcode: DQM05-01

Colibri-L SE MTV

die präzise und robuste Lösung mit integriertem Kugelumlauführungssystem

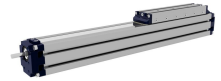


MTV55:

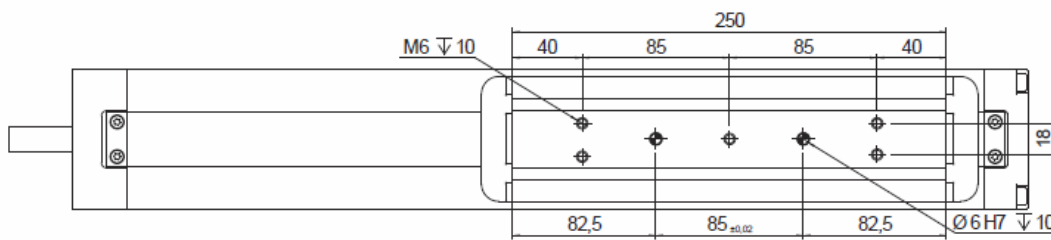
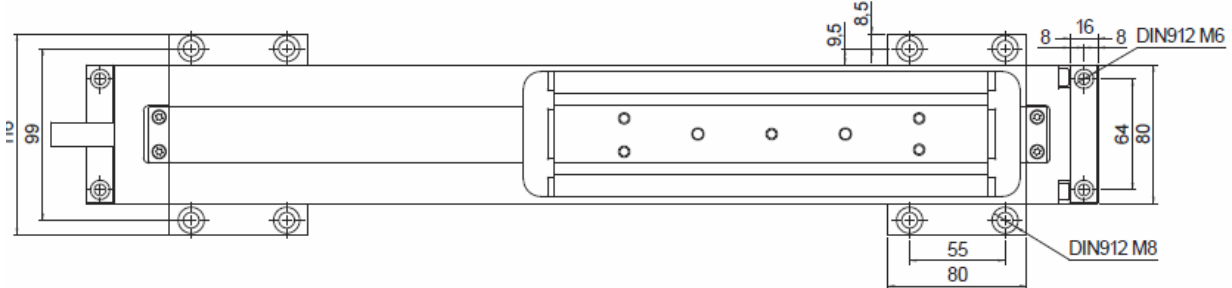


Colibri-L SE MTV

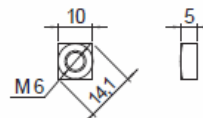
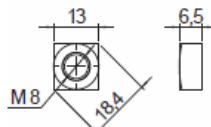
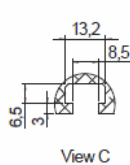
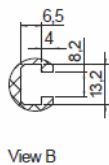
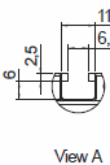
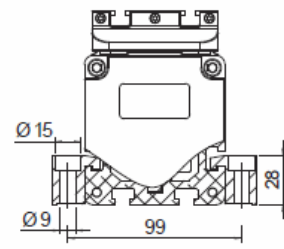
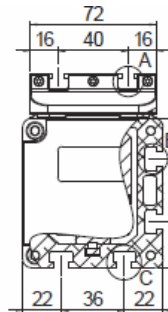
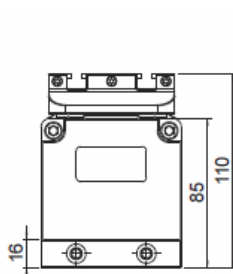
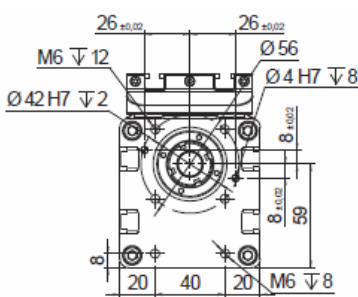
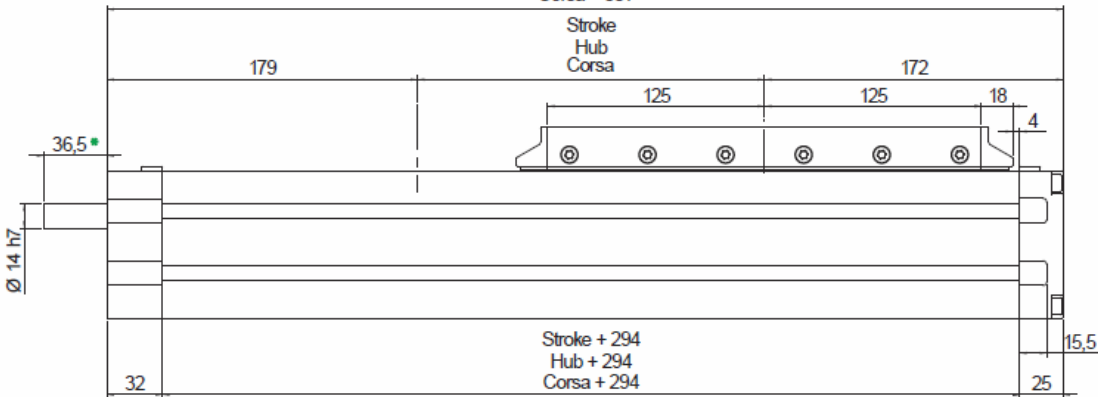
die präzise und robuste Lösung mit integriertem Kugelumlauführungssystem



MTV80:

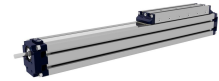


Stroke + 351
Hub + 351
Corsa + 351

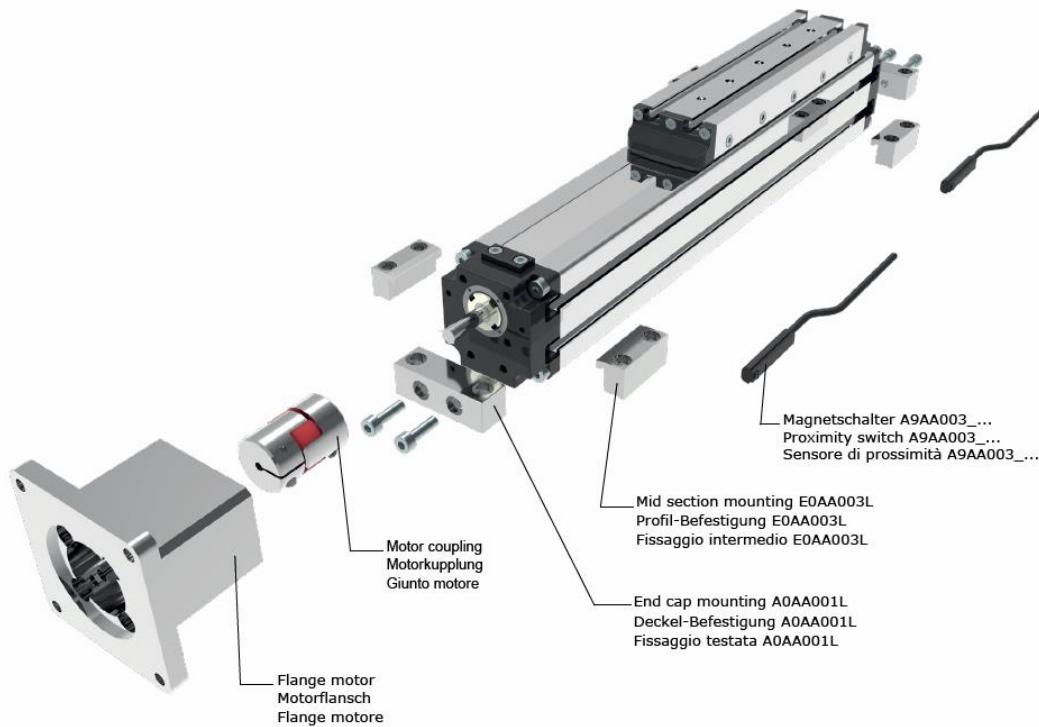


Colibri-L SE MTV

die präzise und robuste Lösung mit integriertem Kugelumlauführungssystem

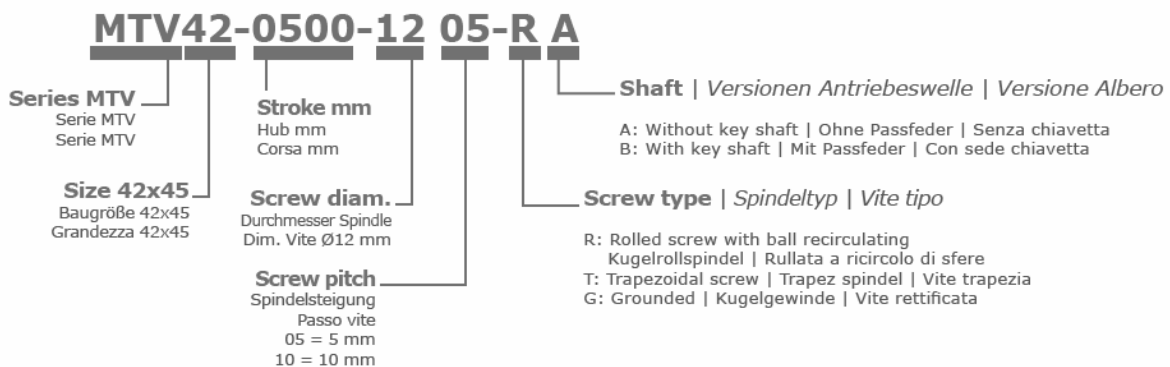


Zubehör:
MTV42:



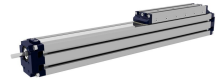
¹Proximity switch A9AA003_... | ¹Magnetschalter A9AA003_... | ¹Sensore di prossimità A9AA003_...

Part nr. Ident nr. Cod.	Cable Kabel Cavo	Output Ausgangsfunktion Uscita
A9AA003_01	with 2 mt cable mit 2 mt kabel con cavo 2 mt	PNP
A9AA003_02	with 2 mt cable mit 2 mt kabel con cavo 2 mt	NPN
A9AA003_03	200 mm with M8 plug in mit 200 mm kabel und M8 stecker 200 mm conn. M8	PNP
A9AA003_04	200 mm with M8 plug in mit 200 mm kabel und M8 stecker 200 mm conn. M8	NPN
A9AA003_NC	with 2 mt cable mit 2 mt kabel con cavo 2 mt	NC

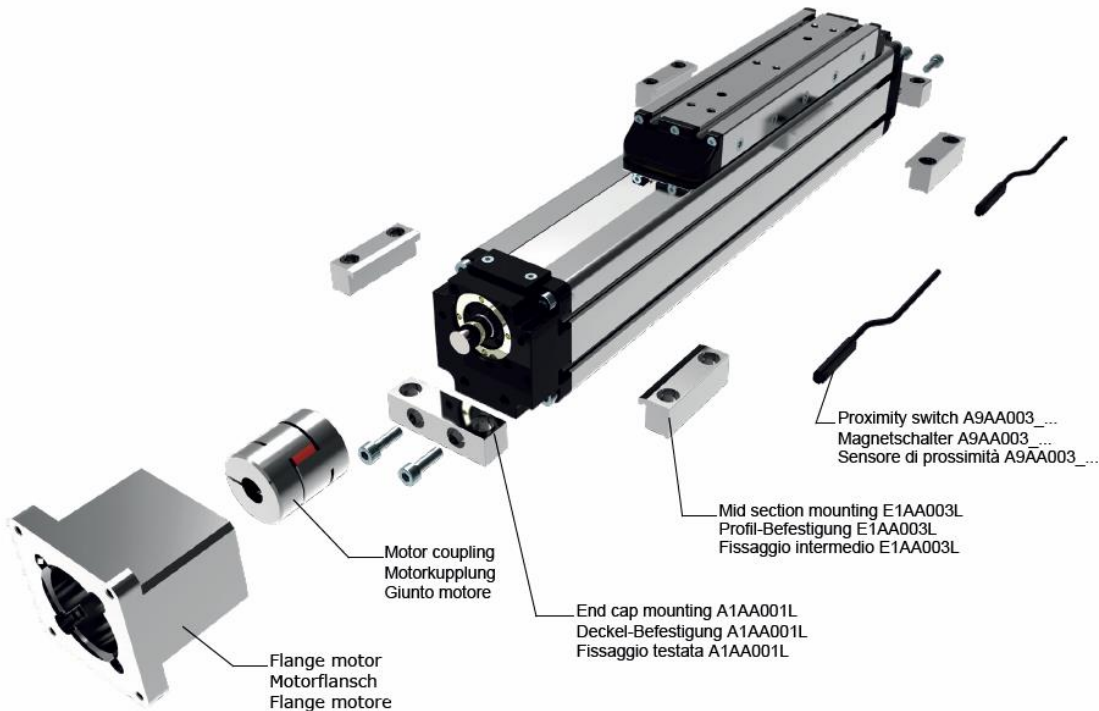


Colibri-L SE MTV

die präzise und robuste Lösung mit integriertem Kugelumlauführungssystem



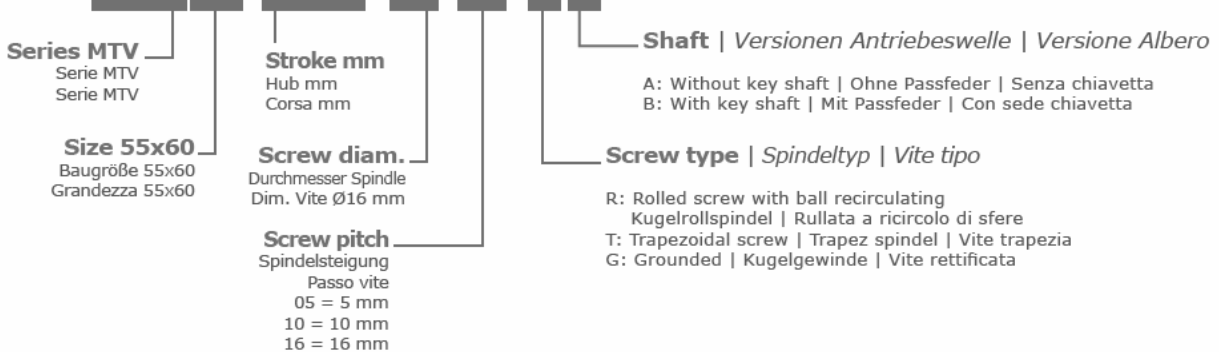
MTV55:



¹Proximity switch A9AA003... | ¹Magnetschalter A9AA003... | ¹Sensore di prossimità A9AA003...

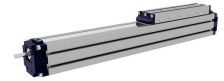
Part nr. Ident nr. Cod.	Cable Kabel Cavo	Output Ausgangsfunktion Uscita
A9AA003_01	with 2 mt cable mit 2 mt kabel con cavo 2 mt	PNP
A9AA003_02	with 2 mt cable mit 2 mt kabel con cavo 2 mt	NPN
A9AA003_03	200 mm with M8 plug in mit 200 mm kabel und M8 stecker 200 mm conn. M8	PNP
A9AA003_04	200 mm with M8 plug in mit 200 mm kabel und M8 stecker 200 mm conn. M8	NPN
A9AA003_NC	with 2 mt cable mit 2 mt kabel con cavo 2 mt	NC

MTV55-0500-16 05-R A

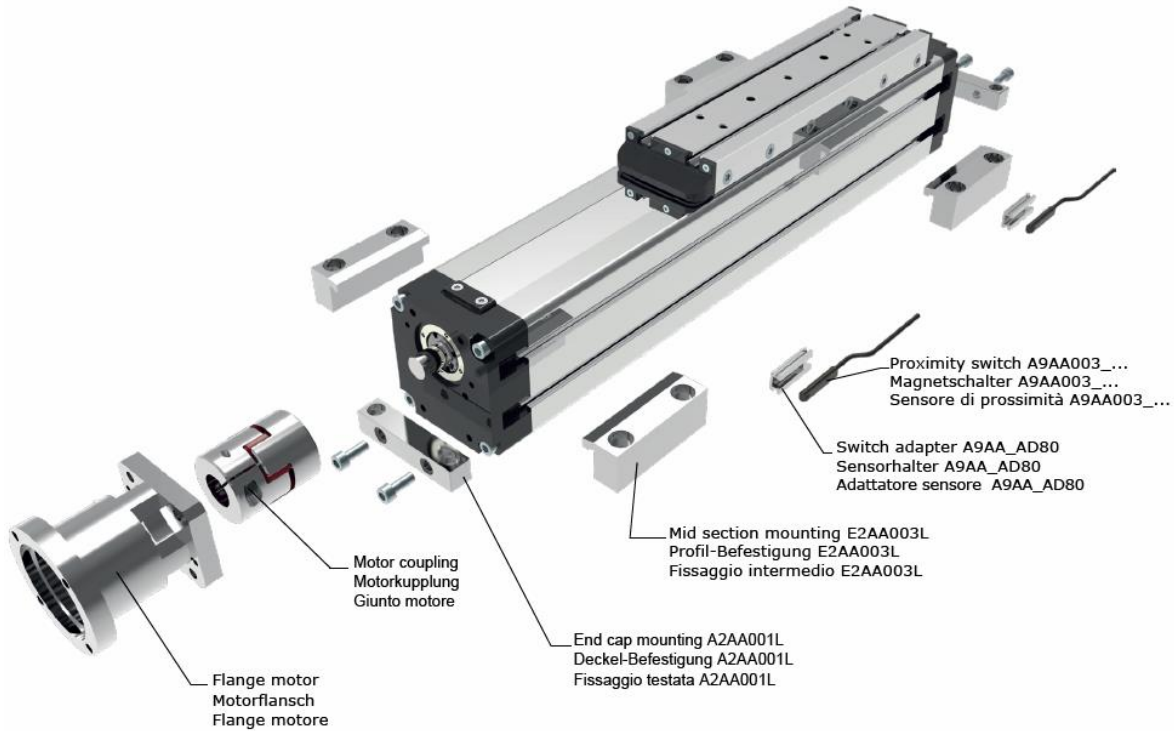


Colibri-L SE MTV

die präzise und robuste Lösung mit integriertem Kugelumlauführungssystem



MTV80:



¹Proximity switch A9AA003... | ¹Magnetschalter A9AA003... | ¹Sensore di prossimità A9AA003...

Part nr. Ident nr. Cod.	Cable Kabel Cavo	Output Ausgangfunktion Uscita
A9AA003_01	with 2 mt cable mit 2 mt kabel con cavo 2 mt	PNP
A9AA003_02	with 2 mt cable mit 2 mt kabel con cavo 2 mt	NPN
A9AA003_03	200 mm with M8 plug in mit 200 mm kabel und M8 stecker 200 mm conn. M8	PNP
A9AA003_04	200 mm with M8 plug in mit 200 mm kabel und M8 stecker 200 mm conn. M8	NPN
A9AA003_NC	with 2 mt cable mit 2 mt kabel con cavo 2 mt	NC

MTV80-0500-20 05-R A

Series MTV
Serie MTV
Serie MTV

Size 80x85
Baugröße 80x85
Grandezza 80x85

Stroke mm
Hub mm
Corsa mm

Screw diam.
Durchmesser Spindle
Dim. Vite Ø16 mm

Screw pitch
Spindelsteigung
Passo vite
05 = 5 mm
10 = 10 mm
20 = 20 mm

Shaft | Versionen Antriebeswelle | Versione Albero

A: Without key shaft | Ohne Passfeder | Senza chiavetta
B: With key shaft | Mit Passfeder | Con sede chiavetta

Screw type | Spindeltyp | Vite tipo

R: Rolled screw with ball recirculating
Kugelrollspindel | Rullata a ricircolo di sfere
T: Trapezoidal screw | Trapez spindel | Vite trapezia
G: Grounded | Kugelgewinde | Vite rettificata